



**Richmond  
Warehouse!**



## For Lease: Warehouse Space

5221 Central Ave., Unit A-8B, Richmond, CA

- Roll-up Door
- 15 +/- ft. Clear Height
- Restroom
- Close to Interstate 580 & Berkeley

### Offering Summary

Available Sq Ft:	1,190 +/- sf
Initial Base Rent:	\$1.75 psf
Lease Type:	Ind. Gross
Min. Lease Term:	2 Years Only
Available:	NOW

Contact:

**Bob Knez**  
(415) 446-4220  
[bob@hlcre.com](mailto:bob@hlcre.com)  
Lic#: 00640535

**Mark Cooper**  
(415) 608-1036  
[mark@hlcre.com](mailto:mark@hlcre.com)  
Lic# 01814831



**HL Commercial Real Estate**  
70 Mitchell Blvd., Suite 202  
San Rafael, CA 94903  
[www.hlcre.com](http://www.hlcre.com)

# For Lease: Warehouse Space

5221 Central Ave., Unit A-8B, Richmond, CA 94804

## Building/Space Description:

This warehouse space has a roll-up door, 15 +/- foot clear height and new paint. There is a private restroom. Parking is abundant with 80 shared parking spaces. No outside overnight parking allowed. Sorry!

## Location Description:

This property is located on Central Avenue close to Costco and other retail and restaurant services. Easy access to Interstate 580, 80 and Hwy. 101. Adjacent to Berkeley. Marin is 15 minutes over the Richmond Bridge.

## Space Information/Features:

Total Available Square Feet:	1,190 +/- sq. ft. (the owner building plans is source)
Ceiling Clear Height:	15 +/- Feet
Power Available at Sub-Panel:	Yes, 100 amps
Parking:	80 unreserved parking spaces
Number of Roll-up Doors:	1
Skylights:	No
Warehouse Ceiling Insulated:	No

## Building Information/Features:

Total Building Square Feet:	33,958 +/- sq. ft.
Year Constructed:	1979 +/-
Zoning:	<a href="#">CR (Commercial Regional)</a>
Fire Sprinklers:	No
Heating & Air Conditioning:	No
Flood Zone Designation:	Zone A (An Area Inundated by 100-year flooding)
This land covered by the floodwaters of the base flood is the Special Flood Hazard Area (SFHA) on the NFIP maps. The SFHA is the area where the NFIP's floodplain management regulations must be enforced and the area where the mandatory purchase of flood insurance for building owners applies. Tenants should strongly consider purchasing flood insurance.	

## Lease Information:

Minimum Lease Term:	Two Years
Initial Base Rent:	\$1.75 psf (\$2,082/mo.)
CAM:	\$0.15/sq.ft (\$178.50/mo.)
Base Rent Increases:	3% per annum
Lease Type:	Industrial Gross
Increases over Base Year Expenses:	Property Taxes
Tenant Expenses:	Garbage, interior maint., and \$75 for electricity (No gas line to premises.)

## Contact:

**Bob Knez**  
(415) 446-4220  
[bob@hlcre.com](mailto:bob@hlcre.com)  
Lic#: 00640535

**Mark Cooper**  
(415) 608-1036  
[mark@hlcre.com](mailto:mark@hlcre.com)  
Lic# 01814831



**HL Commercial Real Estate**  
70 Mitchell Blvd., Suite 202  
San Rafael, CA 94903  
[www.hlcre.com](http://www.hlcre.com)

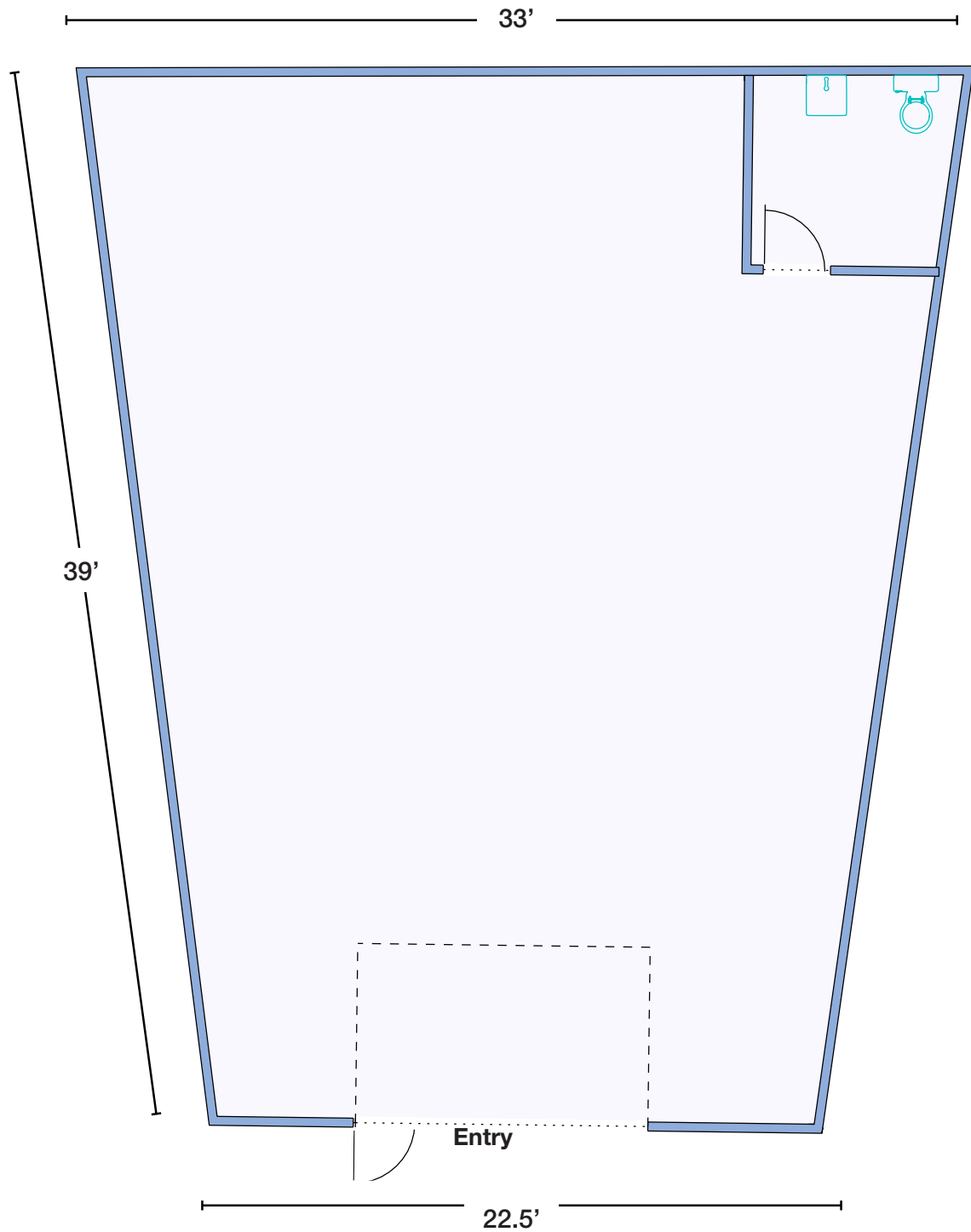
# For Lease: Warehouse Space

5221 Central Ave., Unit A-8B, Richmond, CA 94804



# For Lease: Warehouse Space

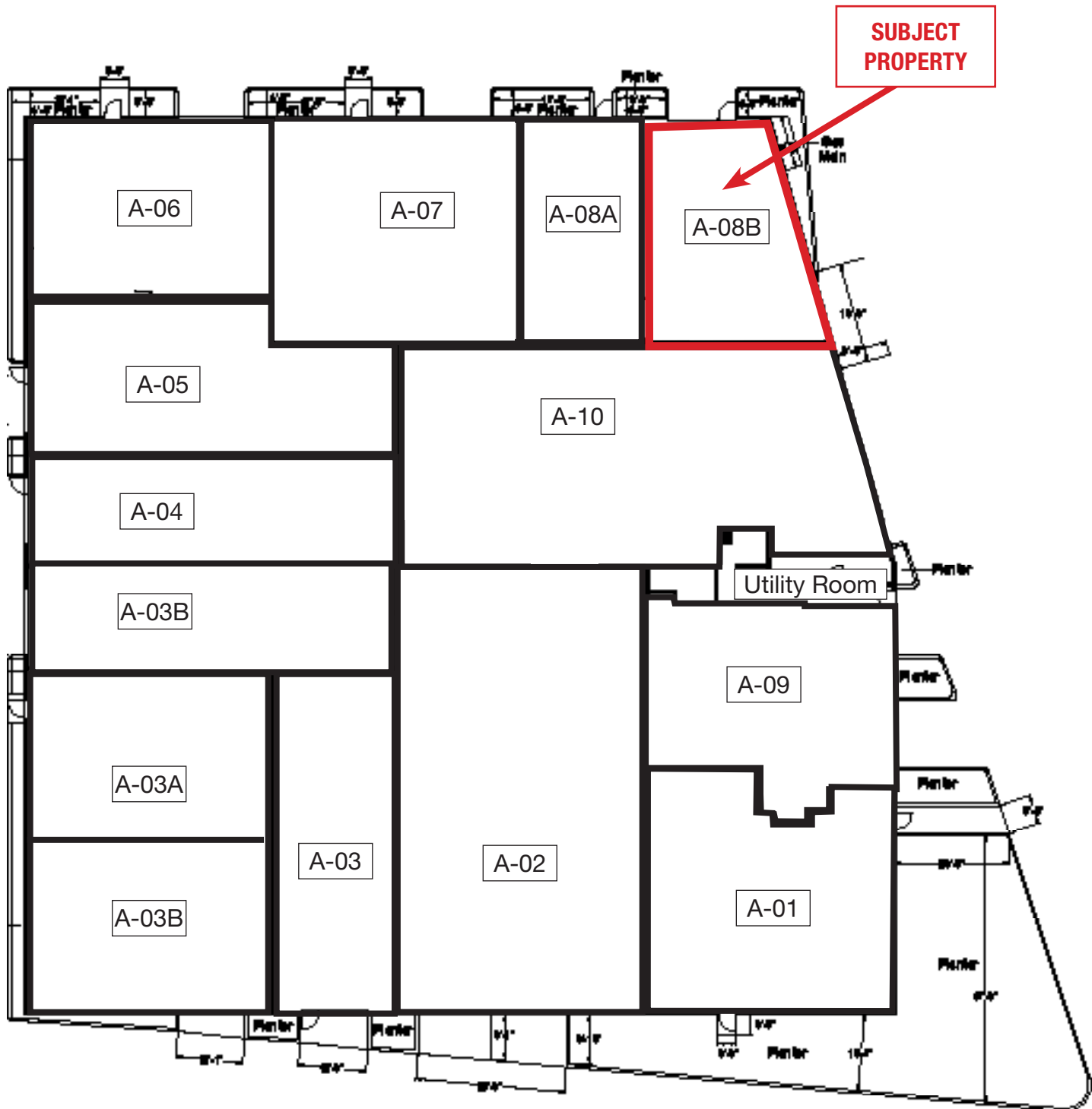
5221 Central Ave., Unit A-8B, Richmond, CA 94804



Measurements are Approximate  
Floor Plan Not to Scale

# For Lease: Warehouse Space

5221 Central Ave., Unit A-8B, Richmond, CA 94804

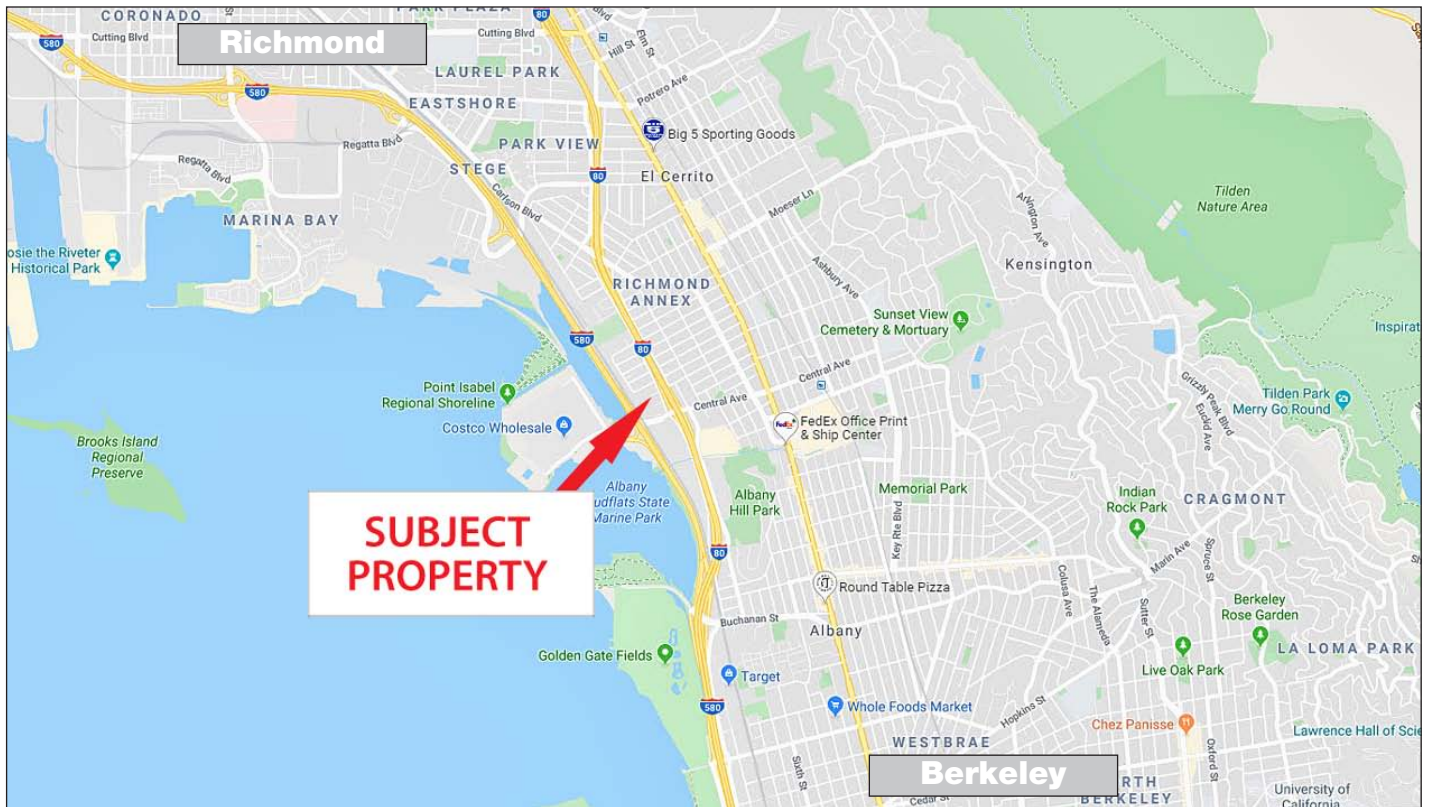


Site Plan Not to Scale

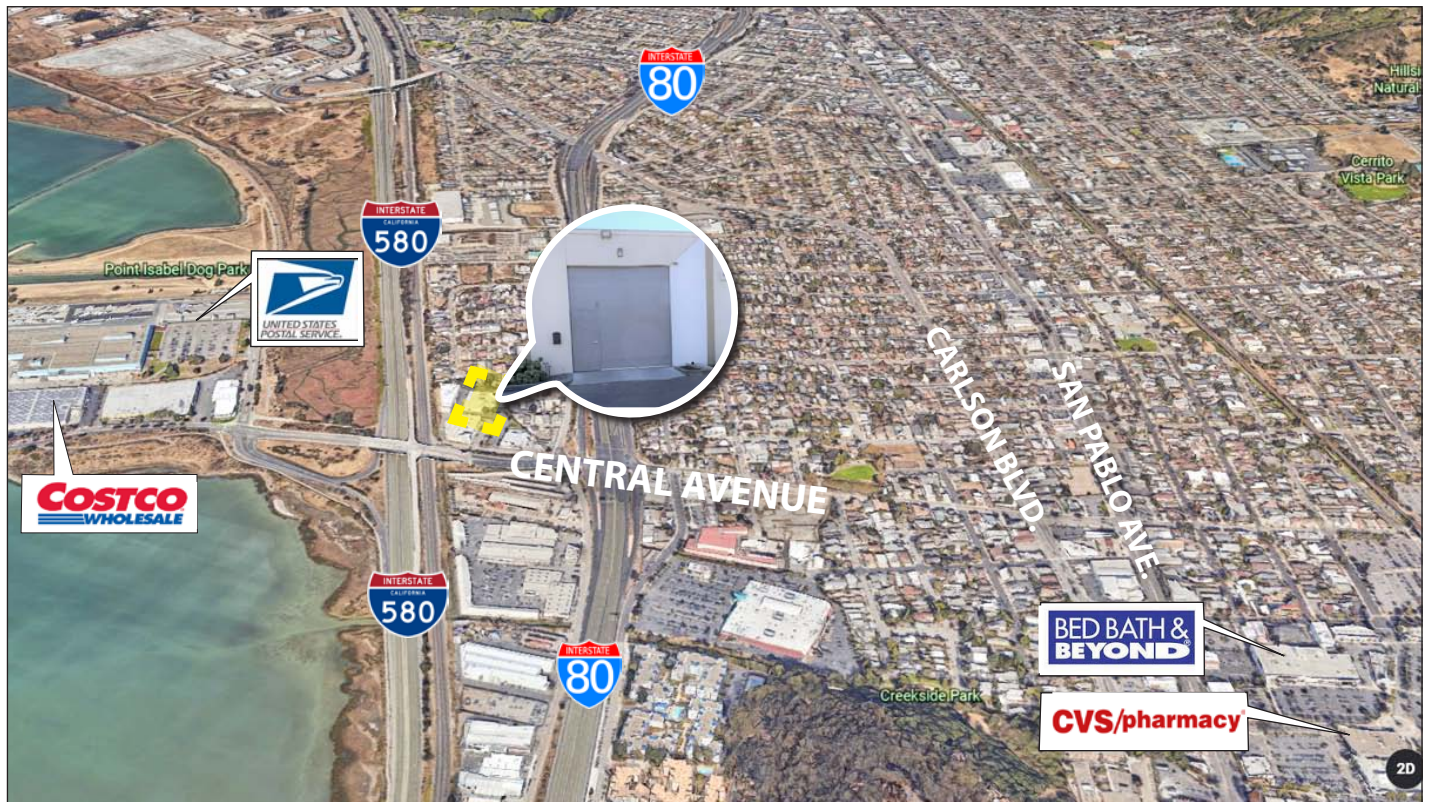


# For Lease: Warehouse Space

5221 Central Ave., Unit A-8B, Richmond, CA 94804



[Click here to View in Google Maps](#)



LIC#: 00640535

LIC# 01814831

No warranty or representation, express or implied, is made as to the accuracy of the information contained herein, and same is submitted subject to errors, omissions, change of price, rental or other conditions, withdrawal without notice, and to any special listing conditions imposed by our principals. The prospective purchaser/lessee should independently verify all information.