



## For Lease: Office Suites

825 College Ave., Santa Rosa, CA

- Shared Kitchenette
- Ample Parking
- Great Location
- Private Waiting Area

### Offering Summary

Available Sq Ft:	196 - 408 +/- sf
Initial Base Rent:	\$600 - 975/mo
Lease Type:	Modified Gross
Lease Term:	2 - 5 Years
Available:	NOW

Contact:

**Matthew Cerecedes**  
 (415) 305-3481  
[matt@hlcre.com](mailto:matt@hlcre.com)  
 Lic#: 01841496

**Mark Cooper**  
 (415) 608-1036  
[mark@hlcre.com](mailto:mark@hlcre.com)  
 Lic# 01814831



**HL Commercial Real Estate**  
 70 Mitchell Blvd., Suite 202  
 San Rafael, CA 94903  
[www.hlcre.com](http://www.hlcre.com)

# For Lease: Office Suite

825 College Ave., Santa Rosa CA 95404

## Building/Space Description:

Historic two-story building, featuring a collection of one room offices occupied by therapists, counselors, and similar professional practices. There are common area bathrooms & a shared kitchenette.

## Location Description:

On College Ave., close to Downtown, Santa Rosa Junior College and Highway 101

## Space Information/Features:

Suite	Square Feet	Monthly Rent	CAM charges
00	196 +/-	\$600	\$60/mo
03	198 +/-	\$685	\$60/mo
04	408 +/-	\$975	\$85/mo

Total Rentable Square Feet: 196- 408 +/- sq. ft.  
(Owner is source. Agents have not verified square footage.)  
Divisible/Can Add: No  
Parking: 10 Shared spaces in private lot. (Unassigned & Unreserved)

## Building Information/Features:

Total Building Square Feet: 4,128  
Year Constructed: 1922  
Zoning/Permitted Uses: [PD 0226](#)  
Fire Sprinklers: No  
Heating & Air Conditioning: Yes  
Flood Zone Designation: X : The area determined to be outside the 500-year flood and protected by levee from 100- year flood.

## Lease Terms:

Minimum Lease Term: Two Years  
Initial Base Rent: \$600.00 - \$975 /month  
Base Rent Increases: 5% annual increases  
Lease Type: Modified Gross  
CAM Charges: (See chart above) All CAM charges increase 5% each year  
(Inc. Gas/Electric, water, common area janitorial & trash removal)  
Tenant Expenses: Telephone, Liability Insurance, & Shared Internet

## Contact:

**Matthew Cerecedes**  
(415) 305-3481  
[matt@hlcre.com](mailto:matt@hlcre.com)  
Lic#: 01841496

**Mark Cooper**  
(415) 608-1036  
[mark@hlcre.com](mailto:mark@hlcre.com)  
Lic# 01814831



**HL Commercial Real Estate**  
70 Mitchell Blvd., Suite 202  
San Rafael, CA 94903  
[www.hlcre.com](http://www.hlcre.com)

# For Lease: Office Suite

825 College Ave., Santa Rosa CA 95404



Contact:

**Matthew Cerecedes**  
(415) 305-3481  
[matt@hlcre.com](mailto:matt@hlcre.com)  
Lic#: 01841496

**Mark Cooper**  
(415) 608-1036  
[mark@hlcre.com](mailto:mark@hlcre.com)  
Lic# 01814831

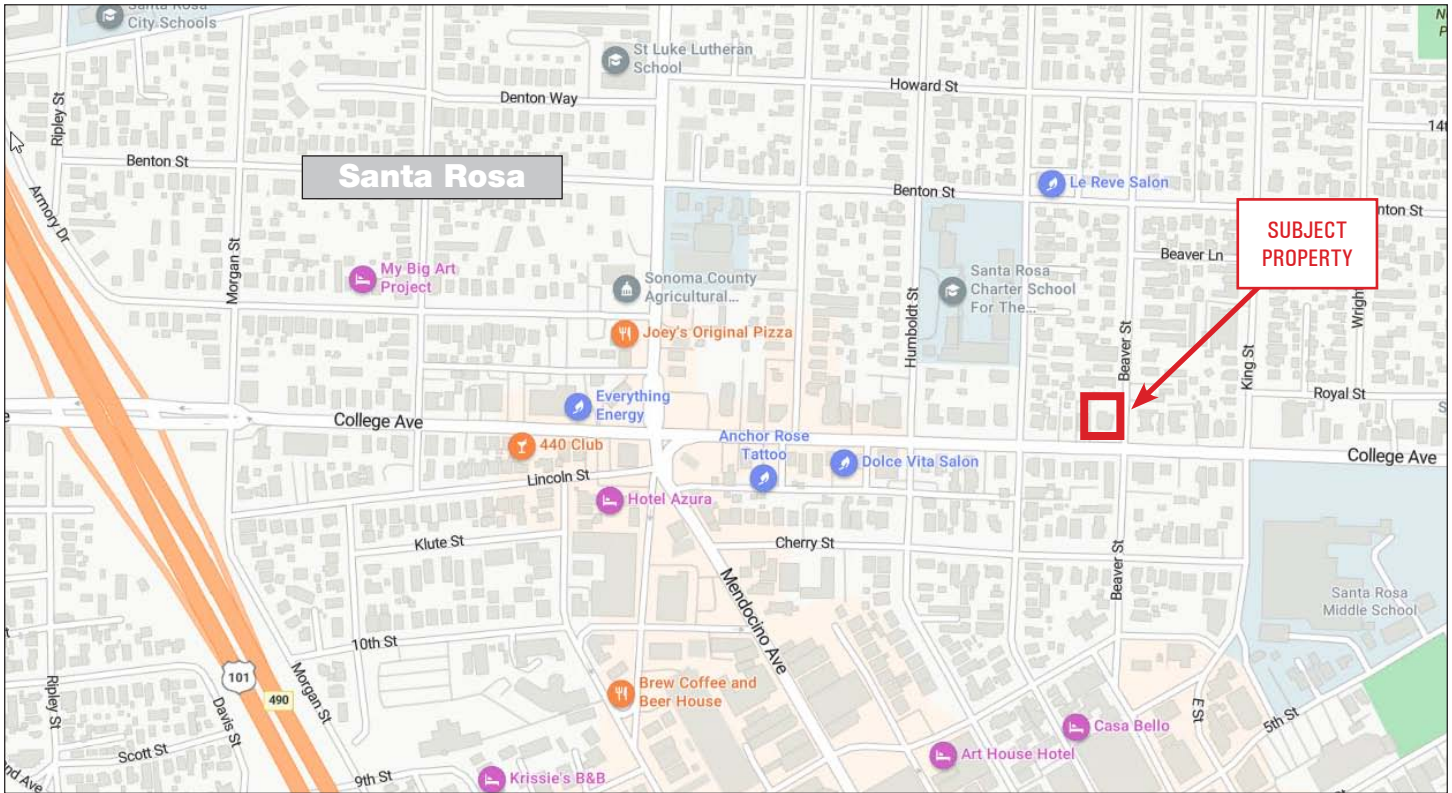


**HL Commercial Real Estate**  
70 Mitchell Blvd., Suite 202  
San Rafael, CA 94903  
[www.hlcre.com](http://www.hlcre.com)

No warranty or representation, express or implied, is made as to the accuracy of the information contained herein, and same is submitted subject to errors, omissions, change of price, rental or other conditions, withdrawal without notice, and to any special listing conditions imposed by our principals. The prospective purchaser/lessee should independently verify all information.

# For Lease: Office Suite

825 College Ave., Santa Rosa CA 95404



[Click here to View in Google Maps](#)



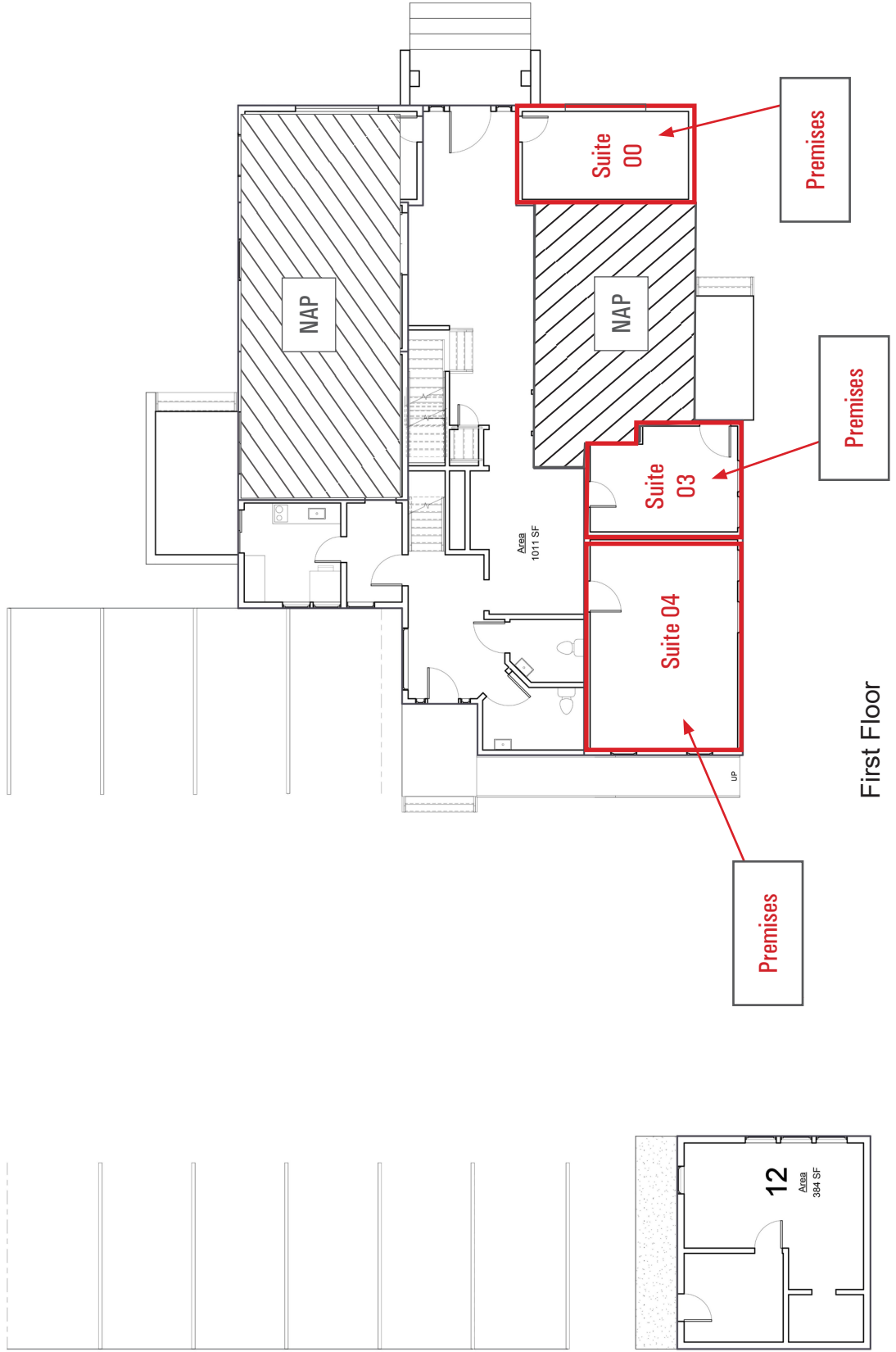
No warranty or representation, express or implied, is made as to the accuracy of the information contained herein, and same is submitted subject to errors, omissions, change of price, rental or other conditions, withdrawal without notice, and to any special listing conditions imposed by our principals. The prospective purchaser/lessee should independently verify all information.

# For Lease: Office Suite

825 College Avenue, Santa Rosa, CA 95404

BEAVER STREET

COLLEGE AVE.

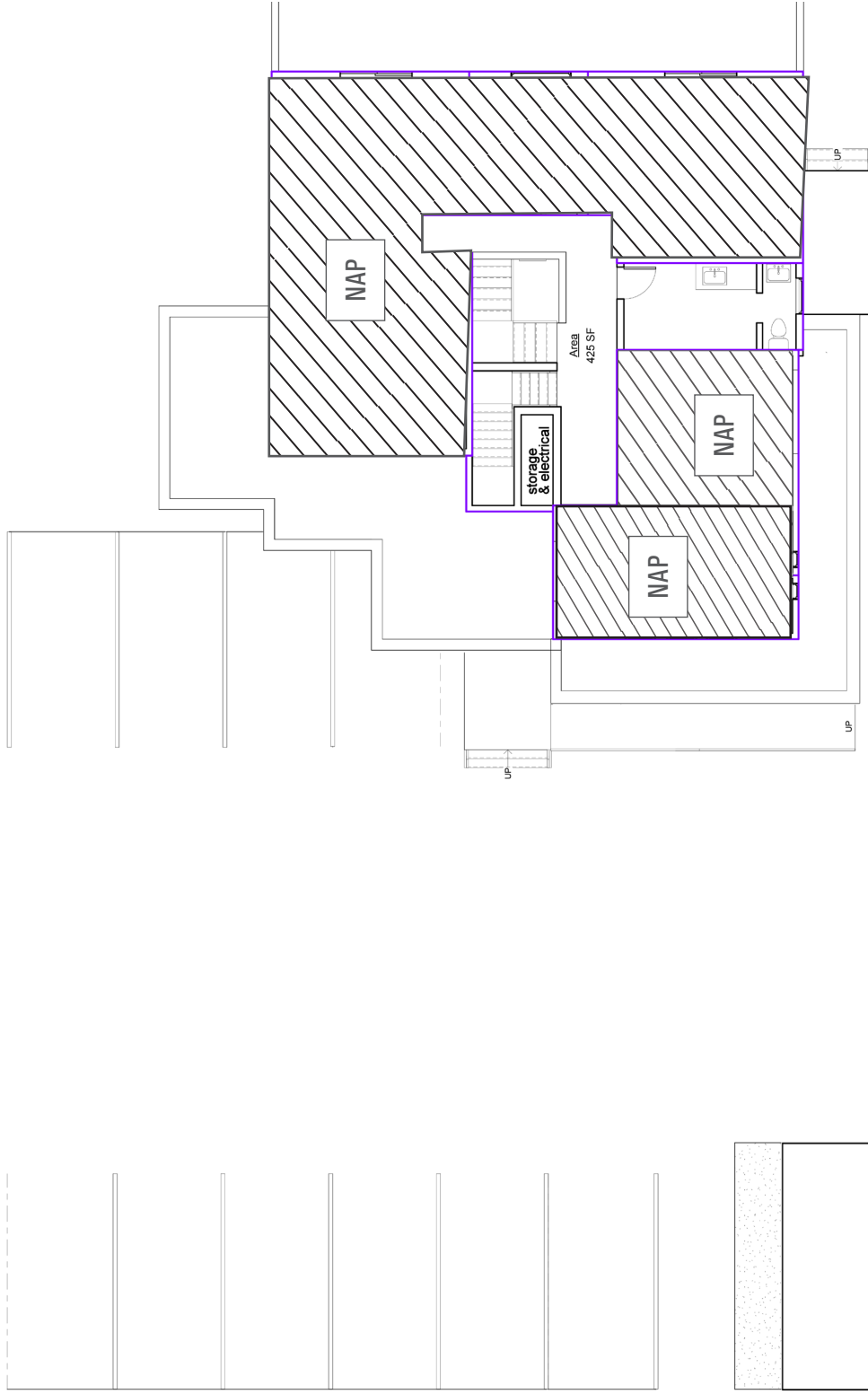


# For Lease: Office Suite

825 College Avenue, Santa Rosa, CA 95404

BEAVER STREET

COLLEGE AVE.



Second Floor