



1350 Fourth Street, San Rafael, CA

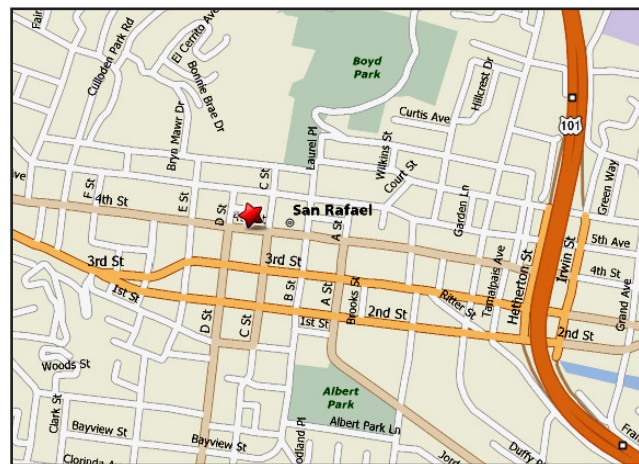
Corner Retail Space For Lease Downtown

- Frontage on 4th and D Streets
- Convenient City Parking Lot
- Good Foot Traffic
- Close to the Post Office

\$2.00 psf

~~\$2.50 psf~~, Gross

1,550 sq. ft.



Contact:

Dirck Brinckerhoff
 (415) 446-4222
 dirck@hlcre.com
 Lic# 00657732

Peter Gettner
 (415) 446-4210
 peter@hlcre.com
 Lic# 00785623



HL Commercial Real Estate

4304 Redwood Highway, Suite 200
 San Rafael, CA 94903-2103
 415.454.2030
 Lic# 00978130 www.hlcre.com

No warranty or representation, express or implied, is made as to the accuracy of the information contained herein, and same is submitted subject to errors, omissions, change of price, rental or other conditions, withdrawal without notice, and to any special listing conditions imposed by our principals. The prospective purchaser/lessee should independently verify all information.

Corner Retail Space For Lease Downtown

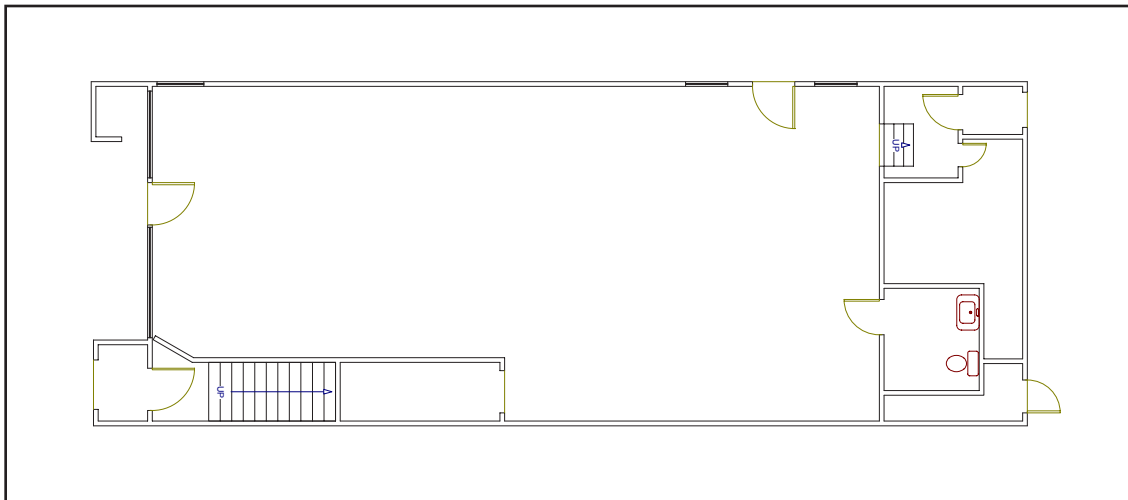
1350 Fourth Street, San Rafael, CA

Property Description:

| | |
|-----------------------------|----------------------------------|
| Available Square Feet: | 1,550 +/- sq. ft. |
| Date Space Available: | October 1, 2008 |
| Zoning: | 4SRC |
| Fire Sprinklers: | No |
| Divisible: | No |
| Parking: | On street and in city lot behind |
| Total Building Square Feet: | 3,200 +/- sq. ft. |
| Year Built: | 1903 +/- |

Lease Terms:

| | |
|---------------|------------|
| Rent: | \$2.00 psf |
| Term Offered: | 3-5 years |
| Lease Type: | Gross |



Contact:

Dirck Brinckerhoff
(415) 446-4222
dirck@hlcre.com
Lic# 00657732

Peter Gettner
(415) 446-4210
peter@hlcre.com
Lic# 00785623



HL Commercial Real Estate

4304 Redwood Highway, Suite 200
San Rafael, CA 94903-2103
415.454.2030
Lic# 00978130 www.hlcre.com

No warranty or representation, express or implied, is made as to the accuracy of the information contained herein, and same is submitted subject to errors, omissions, change of price, rental or other conditions, withdrawal without notice, and to any special listing conditions imposed by our principals. The prospective purchaser/lessee should independently verify all information.